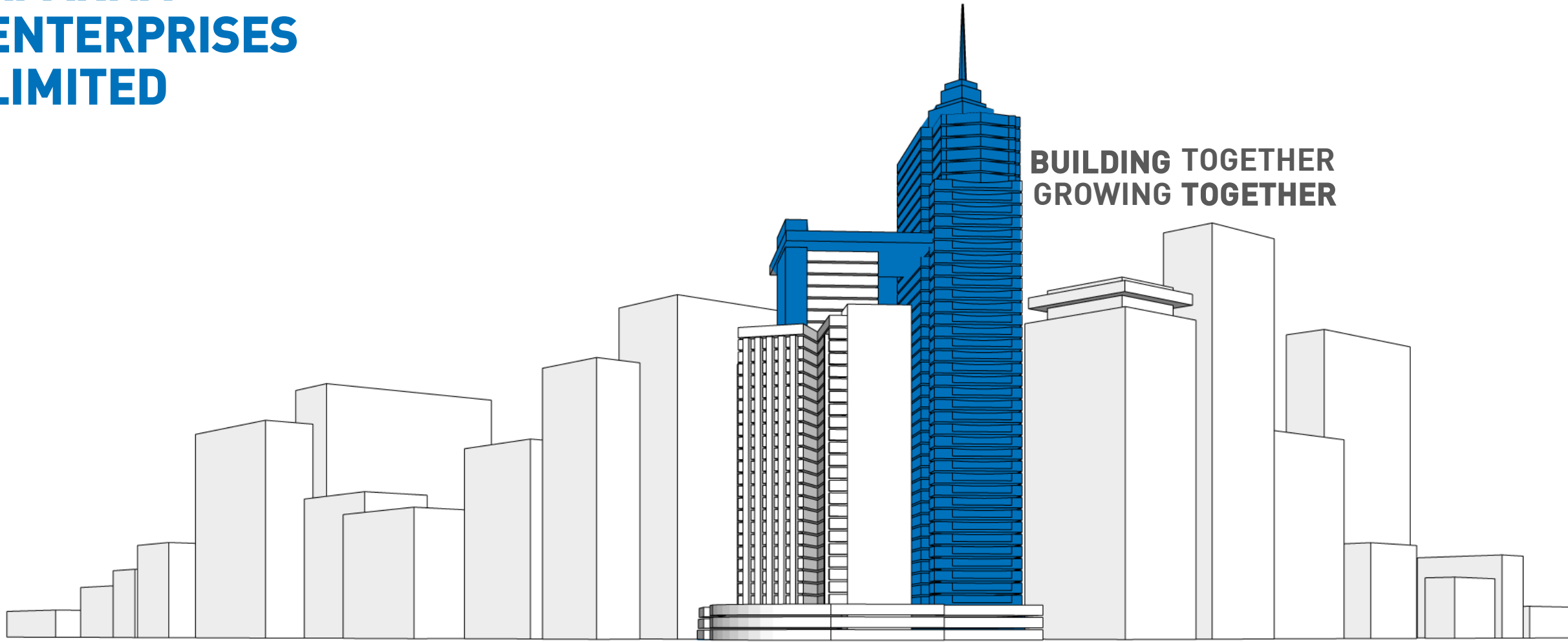
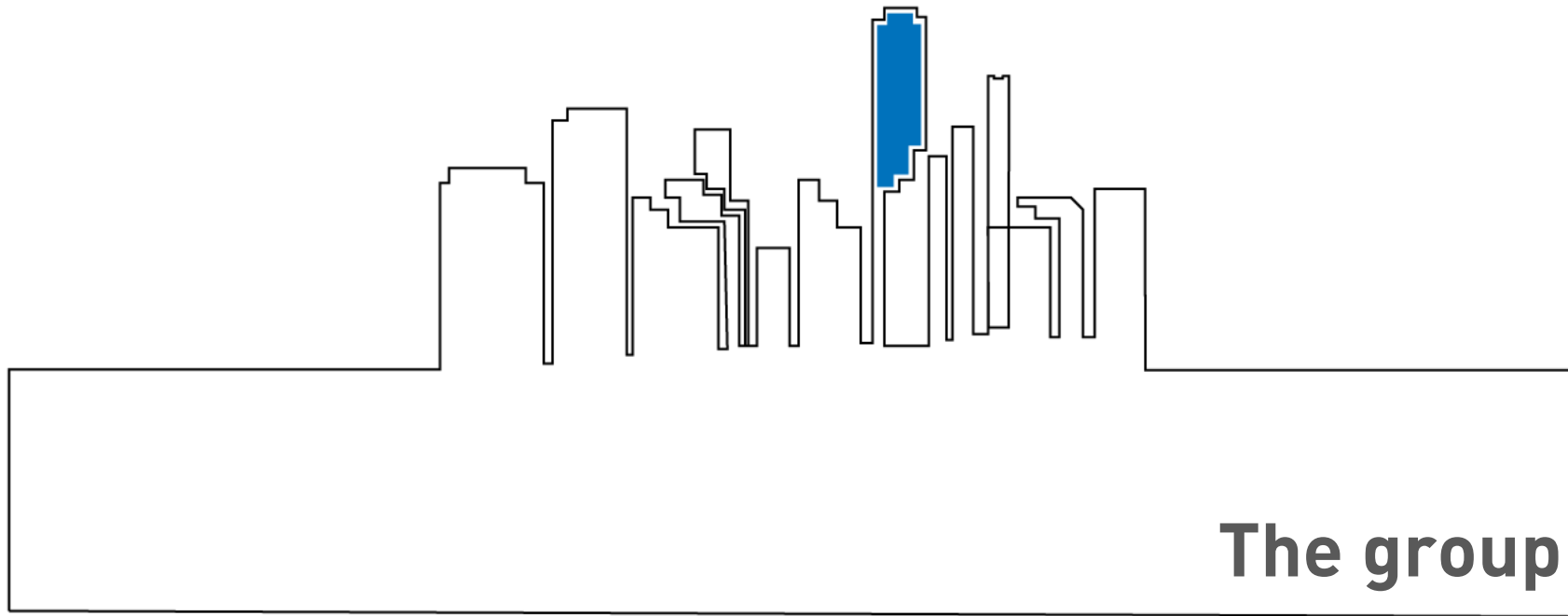


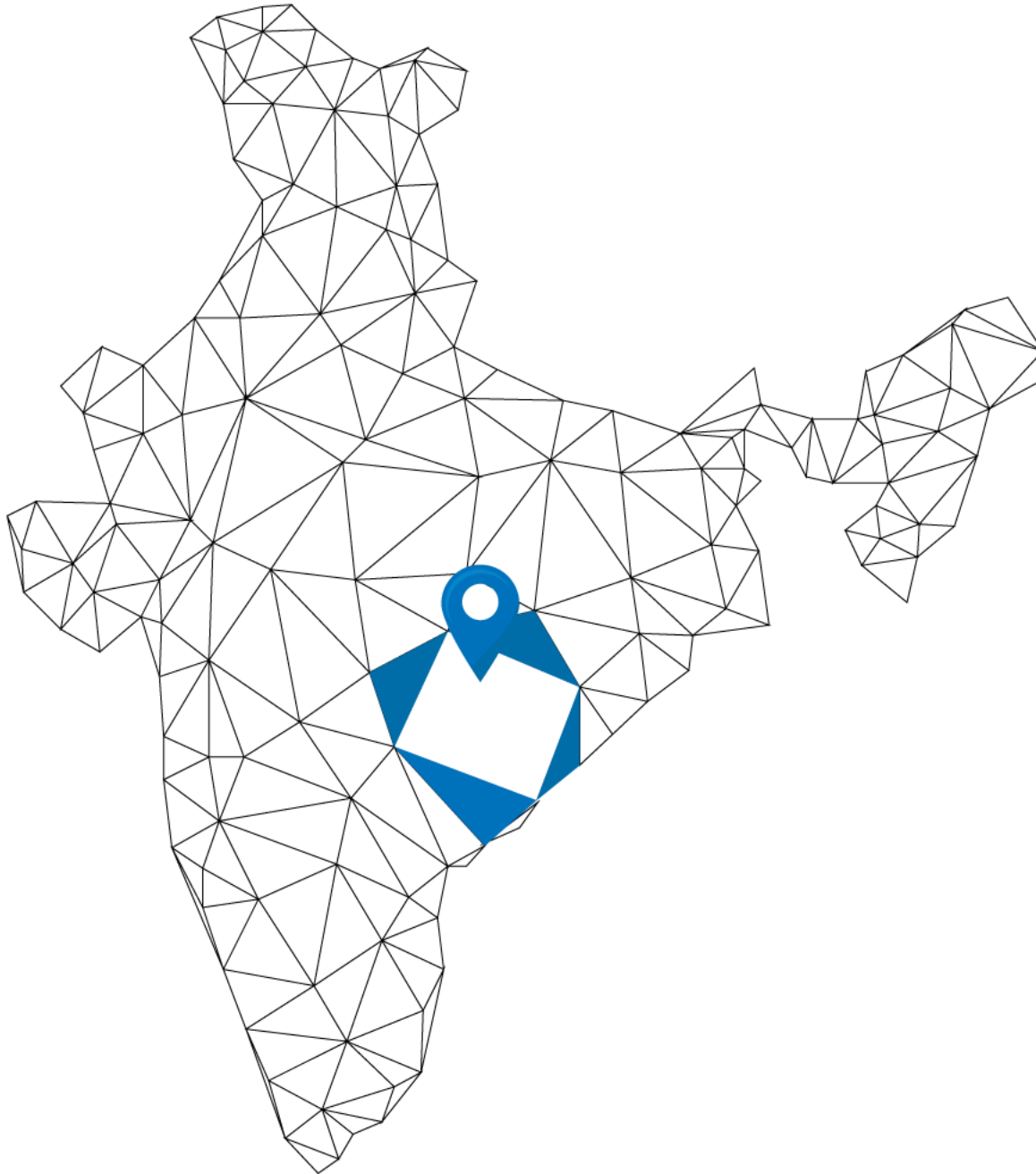


APARNA ENTERPRISES LIMITED



**BUILDING TOGETHER
GROWING TOGETHER**





Since 1990

With a revenue of nearly \$500 million and a staff of over 5,000, the Aparna Group is a top commercial enterprise from Telangana, India expanding nationally. Aparna Group is among the businesses in the construction and building materials sector with the quickest growth rate. Building residential and commercial areas, as well as producing and distributing building supplies, are among the group's many ventures.

Vision

To work together, and
deliver value to customers.
Utilize the **best technologies**
to innovate, create, and
improve our products.

Values

Act with **integrity**
Challenge and **drive change**
Perform with **speed and agility**
Be passionate, and determined to
succeed
Proactively encourage **excellence** as
"Team Aparna".





Aparna Constructions & Estates Pvt. Ltd.

Residential and commercial constructions

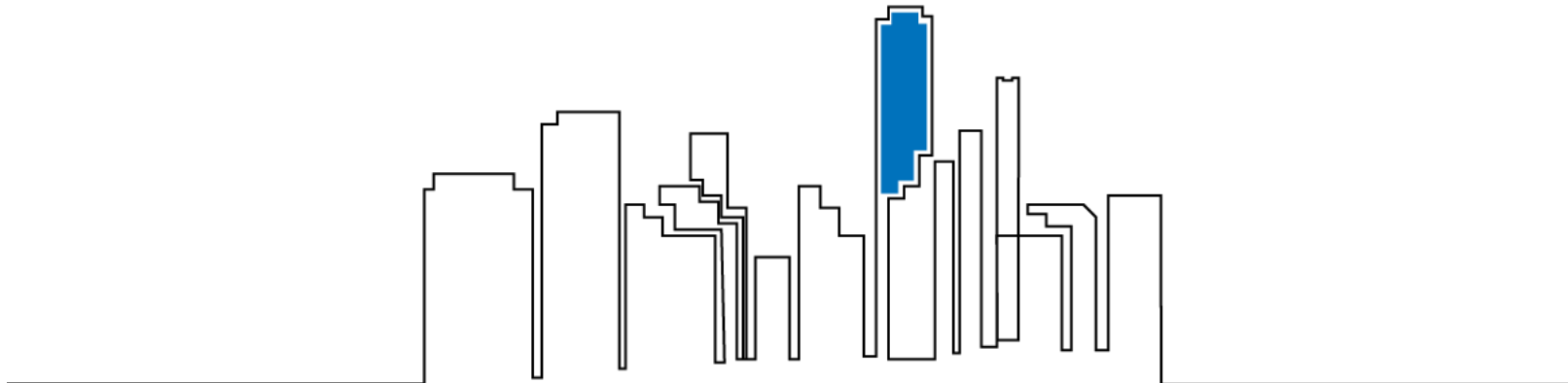
26 Years Young | 47 Projects | 17K happy families | PAN Indian Projects

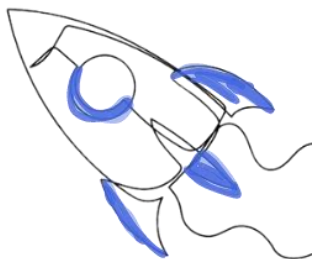
Aparna Enterprises Ltd.

Leading building material manufacturer

3 decades of building landmark projects

21M sq.mt tiles sold | 15M windows & doors | Infinite impressions





E.P.I.C

TACTICAL STRATEGIC APPROACH

Evolve

By making manufacturing operations our key company endeavor, we distinguish ourselves ahead of the competition each time, every time.

People

Greater workplaces are created by greater minds. Investing in people equally is critical to investing in infrastructure and technology.

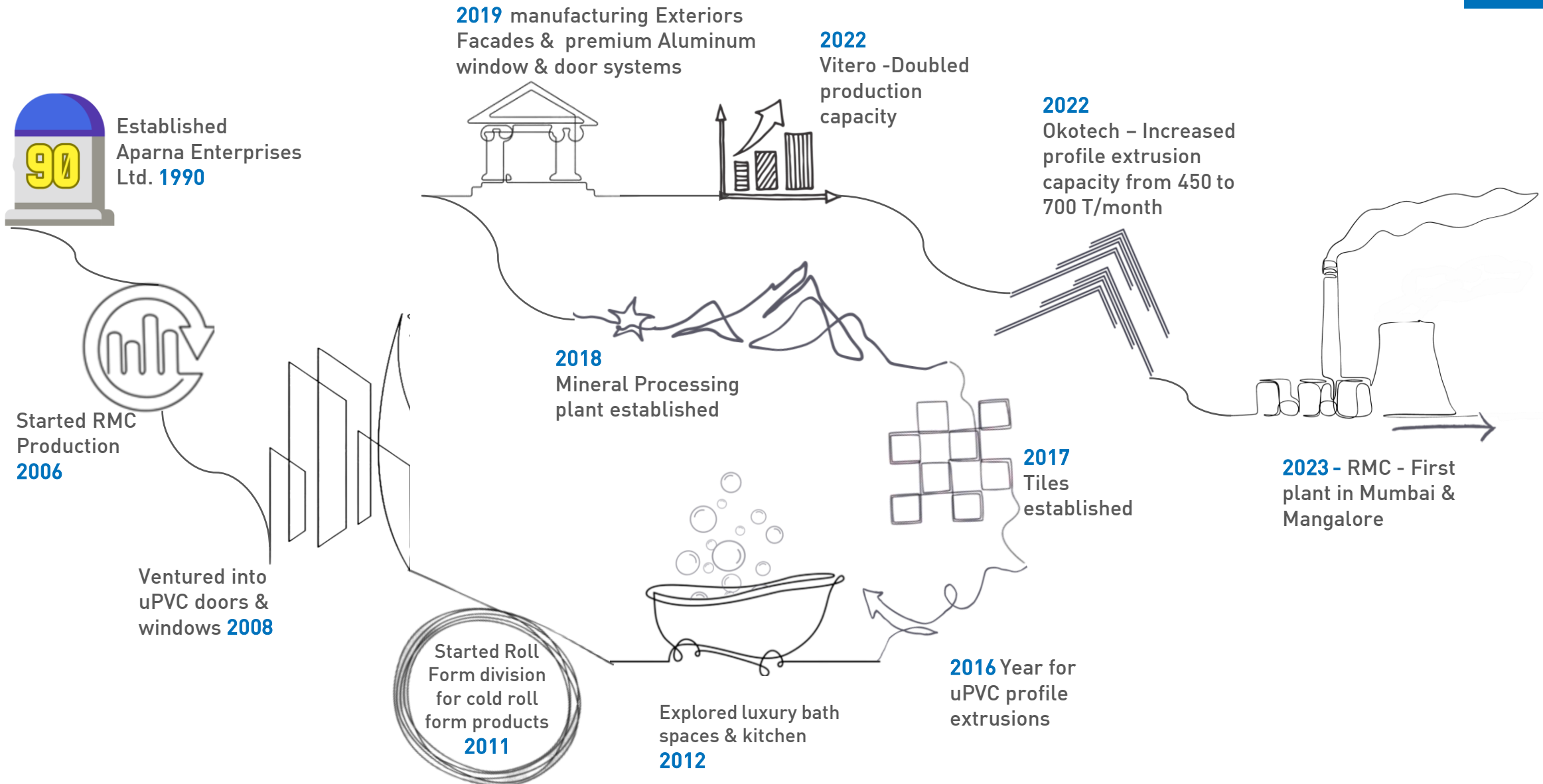
Innovate

Every year, AEL innovates, whether it's by streamlining a straightforward process or altering an established practise to enhance value.

Collaborate

Our collaborative approach with our partners & dealers has helped us grow into a robust network today.

AEL, today!



AEL plays an instrumental part in the development and execution of numerous projects in the infrastructure, healthcare, commercial, and residential sectors. Installation of office buildings, shopping malls, housing developments, and warehouses are all considered commercial enterprises. Healthcare facilities, including hospitals and clinics, are the primary emphasis of the hospital building, which ensures the integration of specialized infrastructure and medical technology. Construction of essential public facilities, including highways, bridges, airports, and utility networks, is included in infrastructure projects. Throughout these industries, AEL is essential to realizing architectural apparitions, obeying safety standards, and producing projects tailored to the individual requirements of customers and communities.

THE AEL PROMISE
#builtelelect



AEL Tomorrow, marching towards a Path of Progress



INR 1650 Crores turnover
in FY 2023

Among **2%** of companies in
India to have A- (stable)/A2+
rating from ICRA

Average **50%** increase in
production capacities across
product verticals

Average **INR 100 Crore**
invested for 3 years in up-scaling
production capacities

Reported CAGR of **15%**
during FY 2018 to 2023



In the last decade, the manufacturing scene has substantially changed from what it was. Currently, industries are gradually implementing automated systems and software-driven processes for consistent quality, precision, and on-time deliveries.

AEL works with several such cutting-edge technological partners on a global scale, like **Krauss Maffei**, **SACMI**, **Wegoma**, **Elumatec**, **Schwing Stetter**, and others, to name a few.



The Rise of Manufacturing Technology



Sustainable us!

The goal of how we conduct business is sustainability, and we look at all available ways to achieve it, while exercising best manufacturing practices for optimizing efficiency.



**Indian Green Building
Council Approved Raw
Materials**

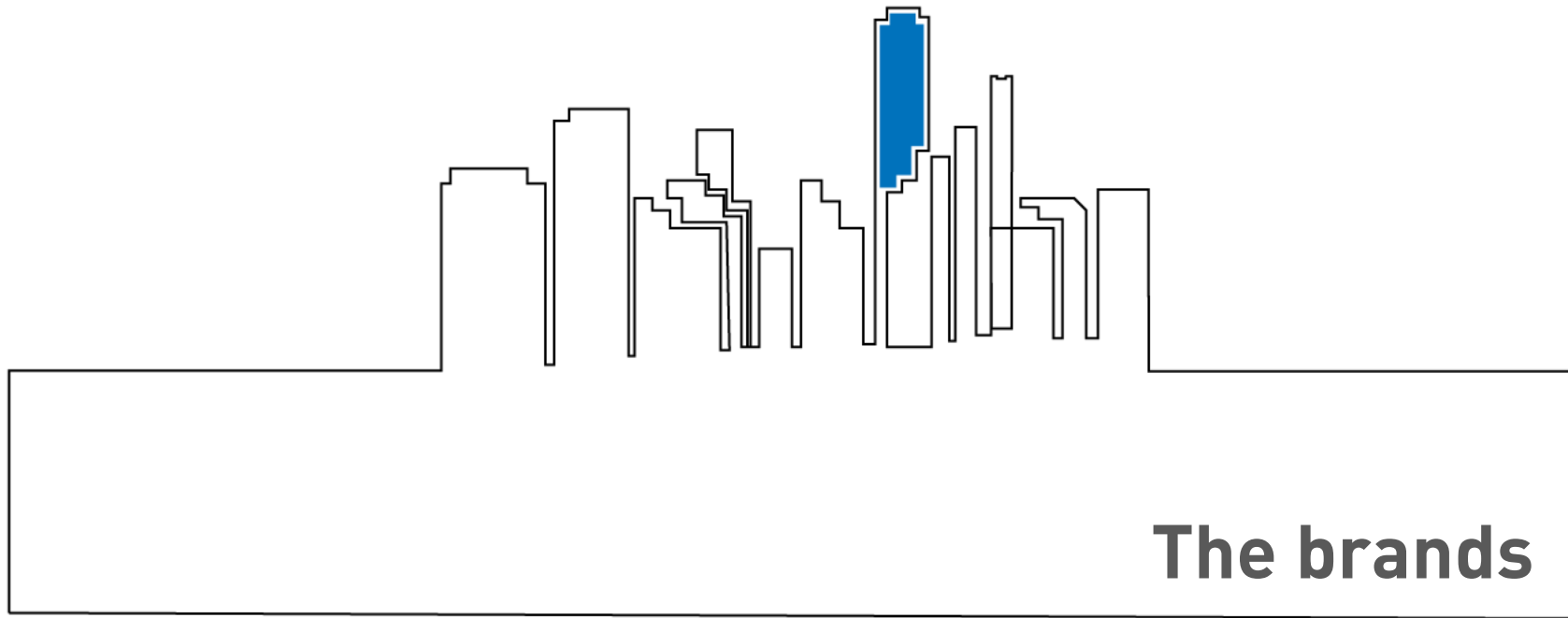


**Natural Gas & Other Eco Friendly
Energy Solutions**

Nationwide Expansion

Andhra Pradesh	Telangana
Chhattisgarh	Punjab
Karnataka	Assam
Odisha	Madhya Pradesh
Jharkhand	Gujarat
West Bengal	Rajasthan
Maharashtra	New Delhi
Kerala	Uttar Pradesh
Tamil Nadu	Bihar







Aparna Enterprises Limited

Technically advanced building material solutions, backed by solid expertise



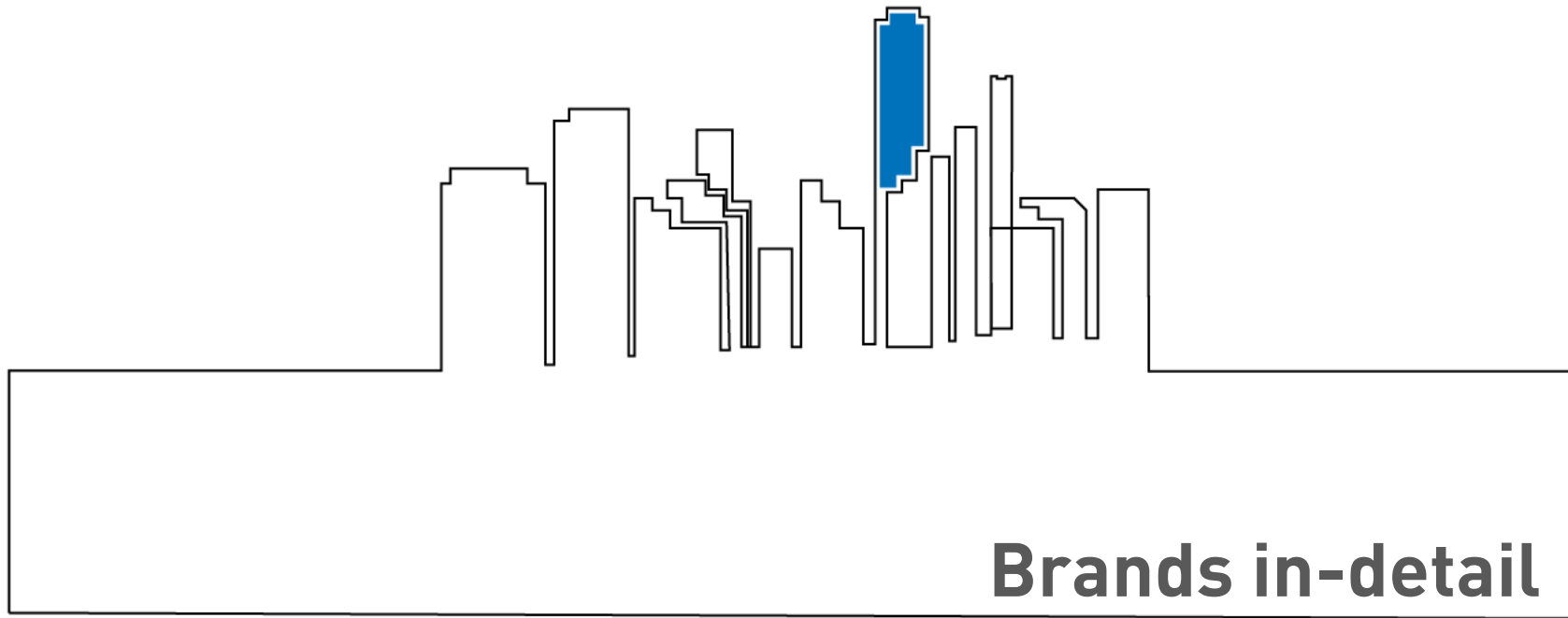


"At Aparna Enterprises, we pride ourselves on understanding and serving the needs of our clients. We have dedicated ourselves to creating a purpose-led and future-fit business. Our ability to reinvent, innovate, and challenge ourselves is a testimony to our business growth. Our philosophy will continue to be on pushing the boundaries of excellence and growing as an agile and resilient organization.

I believe we have reached an important inflection point, having laid the strategic groundwork for AEL 2.0. We are driven by the purpose of providing differentiated product offerings to our clients, and that, in my view, is key to AEL's growth."

Ashwin Reddy, MD, Aparna Enterprises







Today, Aparna RMC creates one of most ready-mixed concrete and has the biggest single pouring capacity. It has the largest production footprint across Telangana, Andhra Pradesh, and Karnataka and uses the most expansive mixing technology.

APARNA RMC



23 RMC Plants

Hyderabad, Mumbai, Bangalore,
Vizag & Mangalore

Largest Fleet of 200+

Own transit mixtures

1.8M Cu mts

Annual pouring capacity

2023 Expansion

1st plants in Mumbai & Mangalore



APARNA VENSTER™

A NEW VIEW

18K Units

Production capacity/month

German Machinery

Production & Fabrication

100%

Lead-free uPVC profiles

Over 2M

Window & door systems installed

Aparna Venster uPVC Windows & Door Systems are the preferred choice of high-quality when it comes to windows or doors. This is primarily due to consistent profiles, efficient noise reduction capability, effective weatherproofing, eco-friendliness, high energy efficiency, and ease of maintenance.



The unique aspect of VITERO Tiles is that the use of nanotechnology helps the brand offer to the Indian market unparalleled designs to give floors and walls the gift of beauty and elegance.



30K Sq.mts

Tiles produced /day

Natural gas fired

2 long kilns

1M Sq.ft

Production facility

Nanotechnology

Fully automated from Italy

2022

Doubled production capacity



Global range

Curated

Numerous Brand

Under one roof

E2E

Bathrooms &
kitchens solutions



In Hyderabad and Vijayawada, Unispace raises the standard for sophisticated product display and retailing of bathspace luxury products. Unispace has the largest customer configuration lounge; it is a cutting-edge meeting area that enables customers to choose their precise choices for fittings as well as configure and customize spaces like kitchens to suit unique requirements and personal tastes.



ÖKOTECH™
Lead free uPVC profiles



60+

Profiles to profile

100%

Eco friendly

Vast range

Designs, colors & laminations

450 to 700 T/month

Increased profile extrusion capacity

Ökotech uPVC profiles are 100% eco-friendly and backed by superior German manufacturing technology.

The manufacturing facility is equipped with a state-of-the-art extrusion unit in Hyderabad, providing premium profiles along with suitable galvanized steel reinforcement manufactured at the Aparna metal reinforcement plant.



Aparna **RollForm**
Quality Forming



An ISO-certified company

Consistent Quality

Automation

- Enabling efficient, automated high-volume production
- Fast and efficient delivery times

Versatility

Roll forming shapes diverse metals like steel, aluminum, and copper, creating intricate profiles

Aparna Rollform forming is a metal forming process that involves passing a strip of metal through a series of progressively shaped rolls, each of which shapes the metal a little more until the desired cross-sectional profile is achieved.



APARNA-CRAFT is a joint venture between Aparna Group, India, a construction and building materials leader and Craft International, Hong Kong, a world leader in façade and exterior design and engineering. The main objective is to bring world-class facades & exteriors to life.



E2E Solution

Designing, planning and execution of innovative façade

Hyderabad Hub

CO production facility

100%

Aluminum windows and door systems

Strategic Partnership

Global player



Aluminium Window and Door systems are designed to cater to premium residential and commercial requirements. These systems are produced at our state-of-the-art production facility with advanced German machinery and are fitted with European-branded hardware to deliver premium quality products.

ALTEZATM
ALUMINIUM WINDOW & DOOR SYSTEMS

Wide range

Residential & commercial

Hyderabad Unit

Surface treatment & fabrication

On schedule, at the best price

Small and large projects across India





Holistic approach

Designing, planning and execution of premium kitchen and wardrobe

Crafted for curation

Customized kitchen & wardrobe solution

KWART infuses modern trends and a young approach to contemporary designs for modular kitchens and wardrobes. A brand that caters to thoughtfully crafted modular kitchens and wardrobes for better functional and aesthetic appeal.

INDUSTRY KNOWS US BY



Best In Class
Green
Manufacturing
company



Sustainable
Product Of The
Year – Aparna
RMC



Best In Class
Award For
Manufacturing
Quality



Most Preferred
Building
Material Brand



India's Most
Inspirational
Leader
Ms. Aparna
Reddy, Executive
Director







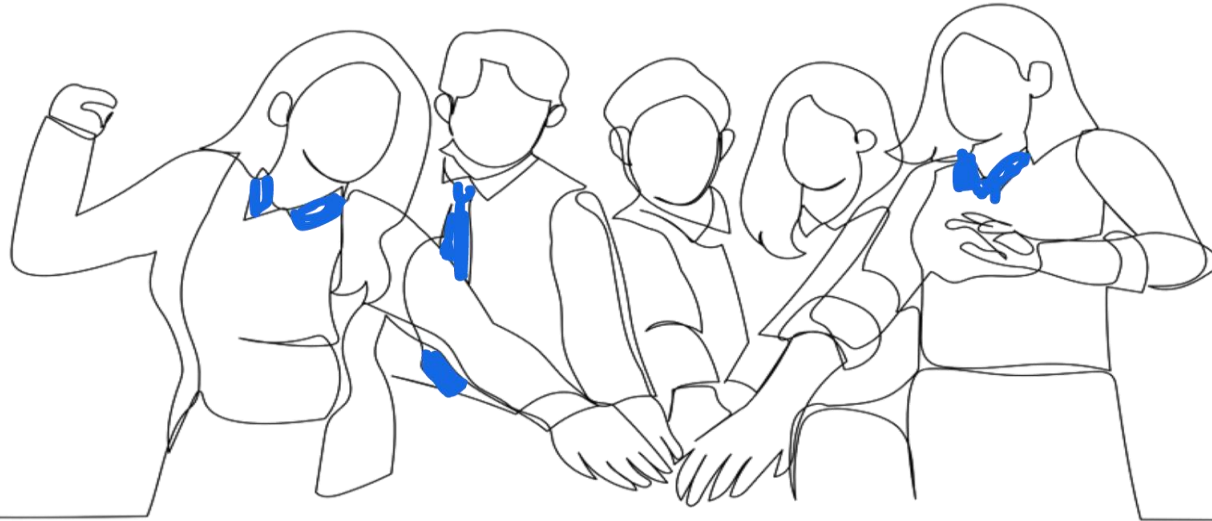
Aparna **ANSWER**

Orphaned youngsters are the subject of our CSR programme. In May 2009, ANSWER—the abbreviation for Aparna Novel Society for Welfare and Research—was established with aid from AEL. The objective is to cater to all of a child's fundamental requirements, including an adequate diet, suitable clothes, health care, education, and chances and opportunities for well-rounded growth.

Our Philosophy
centers on contributing to society

Road map

Set the stage for children to achieve their goals by offering top-notch education and necessities for them.



Today, Aparna Enterprises is more than a brand. It is a catalyst for progress and represents the aspirations of a better quality of life for millions of Indians. We have been a frontrunner in the adoption of emerging technologies. They've helped us expand our plant capacities, grow our product portfolio and bring us closer to our clients and dealers digitally.

Tomorrow, together with you, we hope to go higher!

